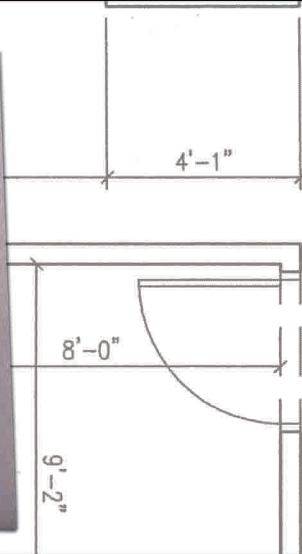


Spring Hinge

UL Listed



Dual Spring Tension Adjustment
Slot / Hole or Hex Wrench .11"



Specifications

ANSI : Meets ANSI A156.17 Grade 1 Self closing hinges
Dimensions and tolerances conform to ANSI A156.7

Gauge of metal : .134" +/- .005" on 4.5" x 4.5" size hinges

Base Material : Steel (ANSI K81071F) or Stainless Steel (Grade 304)(ANSI K81071F)

Templating : All hinges have templated hole locations for wood or metal doors

Swaging : 1/16" Swage standard which provides 1/16" of clearance between leaves

Fasteners : Each box of 3 hinges contains full set of machine and wood screws

Adjustability : Spring tension can be adjusted with hex wrench or tension rod (both are provided)
Spring tension is held by tension pin inserted into tension pin hole

Labeled Door Sizes : Maximum labeled door size (As set forth by NFPA80)
4'-0" wide x 8'-0" tall x 1 3/4" thick

NFPA 80 Reference : Meets NFPA80 standard for 3 Hour Fire Doors
NFPA 80 requires minimum of 2 spring hinges to be used on labeled doors

Warranty: Limited Lifetime Warranty

Note: Weather stripping, carpet drag, wind, drafts & twisted/misaligned doors or frames may require additional spring hinges to be used



Available Finishes

US #	BHMA #	Finish Description
US3	632	Bright/Polished Brass
US4	633	Brushed/Satin Brass
US10B	640	Oil Rubbed Bronze
US15	646	Brushed/Satin Nickel
US26	651	Bright/Polished Chrome
US26D	652	Brushed/Satin Chrome
US32D	630	Brushed/Satin Stainless Steel
USP	600	Prime Painted



**Other Finishes Available upon request



211 Endeavor Drive - PO Box 680
Rogersville, MO 65742
PH 877-258-1262 FX 877-888-0150
www.designhardware.net